

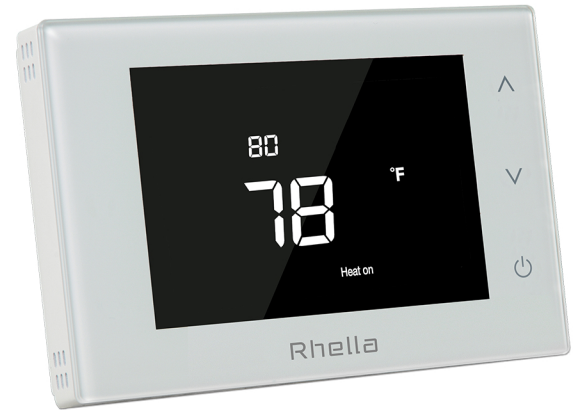
User Guide

Rhella FST024 Floor Sensing Thermostat with an included floor sensor.

Welcome

Congratulations on your purchase of a Rhella hydronic heating thermostat.

Rhella FST024 hydronic heating thermostat with set and forget features.




Featuring


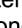
- 4.3" touch sensitive and user-friendly LCD display
- Floor temperature sensor.
- Designed for radiant floor heating
- Floor temperature control
- Floor temperature display
- Pulse width modulation
- Backlight

Operating Instruction

On/Off Setting

When the thermostat is powered on, it displays the default information. Press  again to toggle it off.


Temperature Setting

While in default display mode, press  or  to set the target floor temperature. After adjusting the temperature, the thermostat will automatically save the setting in 3 seconds if no other buttons are pressed. The temperature range is adjustable from 5 - 32 °C (41 - 90 °F)

Call for Heat

1. When the floor's temperature drops 1°C/2°F lower than the preset temperature the thermostat will call for heat and the display will show: Heat on.
2. When the floor's temperature is 1°C/2°F higher than the preset temperature the thermostat will stop calling for heat and the display will change to: Heat off

Set Up

When the thermostat is OFF:
Press  for 3 seconds to enter the configuration interface.
Default values and options are below:

NO.	Parameter	Setting Range	Default	Note
000	Temperature Calibration	-5~5°C (-10~10°F)	0	
001	Backlight	0, 1	0	0: OFF 1: ON
002	Celsius/ Fahrenheit	0, 1	1	0: °C 1: °F
003	Key Volume	0, 1	1	0: Mute 1: ON
004	Thermostat ON or OFF after power loss	0, 1 or 2	0	0: OFF 1: ON 2: Last State
005	Version No.	10	10	-
006	Factory Reset	0 to 255	52	To reset change to 55 and press v

Specifications

Single Zone Heat Only
Microprocessor control.
Packaged Weight: 0.97lb(440g)
Dimensions: 136 x 94 x 26mm
Enclosure: White PVC Plastic
Indoor use only, 32 to 122°F (0 to 50°C)
RH≤90% non-condensing
Power: 24V AC, 50/60HZ,
1.8VA Standby, 56VA max fully loaded, Class 2
Relay: 30V 2A, Class 2 circuits
Sensor: NTC thermistor, 10KΩ@77°F(25°C±0.2°C) β=3950
Control Range: 41 to 90°F (5 to 32°C)
Warranty: Limited 2 Year

Simplicity

The Rhella FST024 is an easy to use floor sensing thermostat with set and forget features.

All on one screen

No confusing hidden sub menus.
The display shows the target and current floor temperatures.
Shows if thermostat is calling for heat.

Only what's relevant

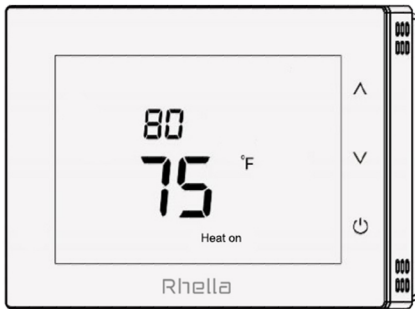
An ON/OFF touch button.
UP and DOWN arrows
for adjusting the target temperature.

For more information please visit
Rhella.com

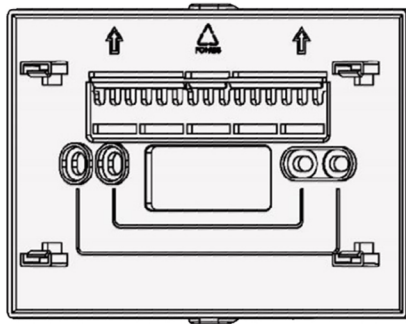
Installation

1. Separate the wallplate from the faceplate by pulling them apart using a flat head screwdriver.
2. Install the wallplate. Make sure the arrows pointing up.
3. Insert all the wires into the right terminals according to the wiring diagram.
4. Evenly push the faceplate into the wallplate until it's fit tightly.

- Please read all instructions and documentation and save them for future reference.
- Before proceeding with the installation, verify that 24VAC is supplied as specified.
- Make sure the power is off when installing to avoid damage to equipment and/or personal injury.
- A qualified electrician understanding wiring diagrams and electrical safety should complete the installation following the instructions.



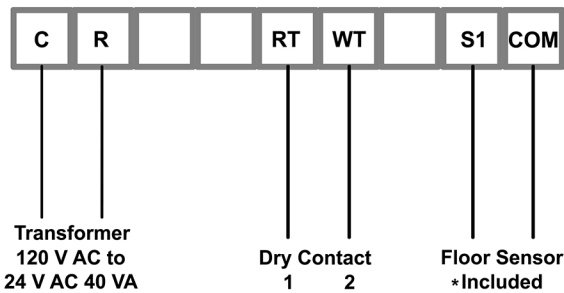
Faceplate



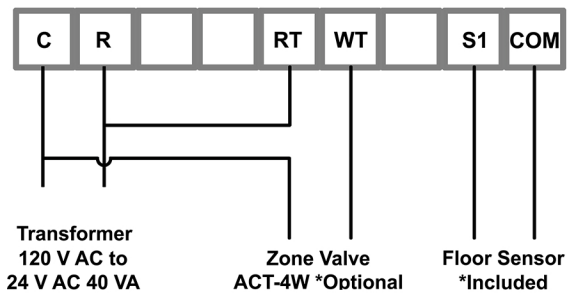
Backplate

Wiring

Pump Relay Wiring



Zone Valve Wiring



! The information contained herein is not intended to replace the experience of a trained product installer. You are required to thoroughly read all installation instructions and product safety information before beginning the installation of this product.