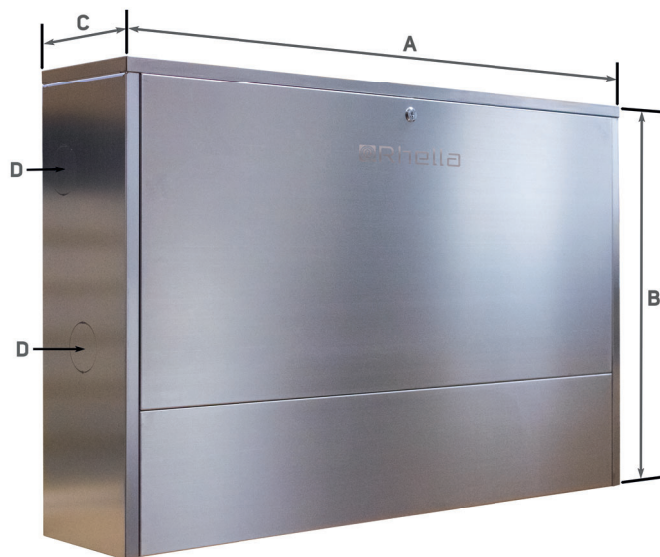
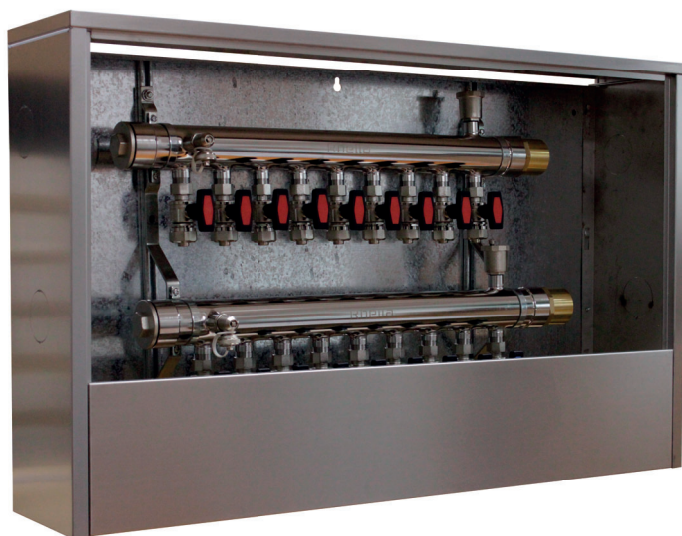




# STAINLESS STEEL CABINET



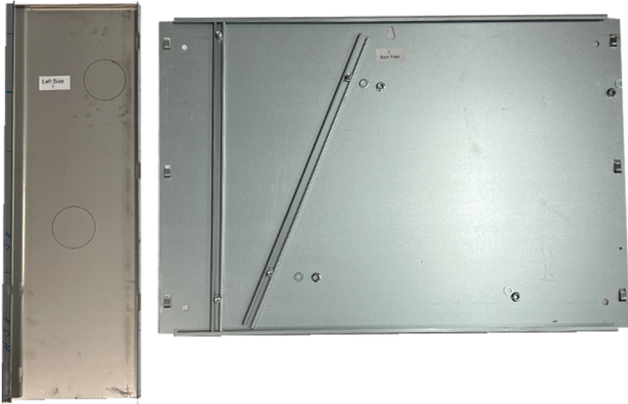
## Wall Mounted 304 Stainless Steel Lockable Cabinet

- Lockable, Removable Front Panel
- Designed for the Rhella 2" XFM Snow Melting Manifold
- Two 2-3/4" Perforated Openings on Both End for Easy Side Connections
- Can be Installed Indoor or Outdoor - Weather Proof
- Durable 1.3mm, 16 Gauge 304 Stainless Steel Construction
- Manifold Sold Separately

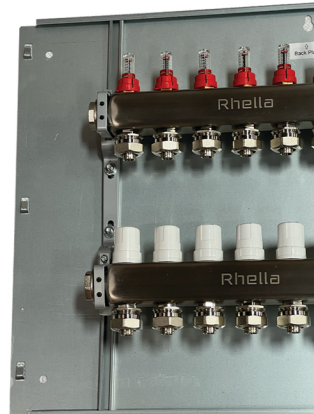
| Model Number | XFM Max Size   | A       | B       | C      | D      | Weight |
|--------------|----------------|---------|---------|--------|--------|--------|
| XFMCS8       | Up to 8 Loops  | 31-1/2" | 26-3/4" | 8-3/4" | 2-3/4" | 32 lbs |
| XFMCM8       | Up to 12 Loops | 41-3/4" | 26-3/4" | 8-3/4" | 2-3/4" | 40 lbs |
| XFMCL8       | Up to 16 Loops | 55-1/8" | 26-3/4" | 8-3/4" | 2-3/4" | 50 lbs |
| XFMCX8       | Up to 22 Loops | 70-3/4" | 26-3/4" | 8-3/4" | 2-3/4" | 60 lbs |

- Before assembly, remove the protective film from each part.
- The channels can be moved sideways after installing the manifold.

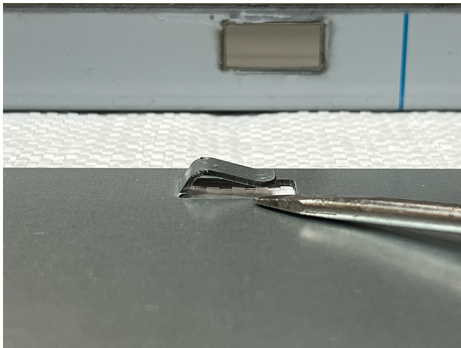
1. Insert the channels and bolts into their designated positions.



2. Install the manifold.



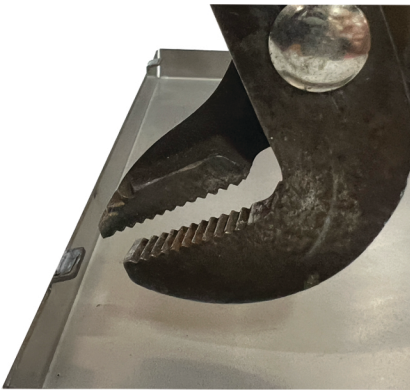
3. Make sure there is a gap before installing side panels.



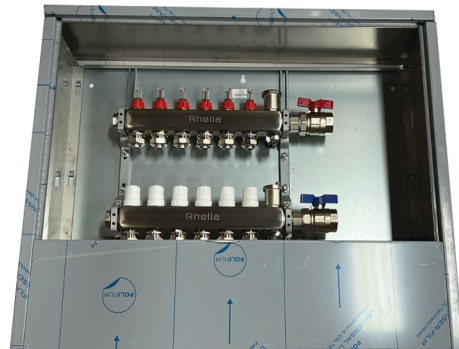
4. Install the top with the 4 screws.



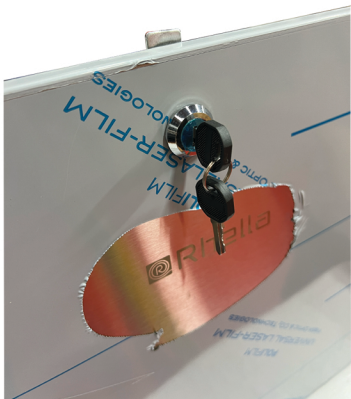
Use pliers to bend the tabs slightly, if needed.



6. Install the bottom panel.



7. Install the lock.



8. Tighten the screw.

